

# ‘Tribeca’ Hybrid Tomato; Fla. 8124C and Fla. 8249 Breeding Lines

John W. Scott<sup>1</sup>

University of Florida, Gulf Coast Research and Education Center, 14625 CR 672, Wimauma, FL 33598

Stephen M. Olson

University of Florida, North Florida Research and Education Center, 155 Research Road, Quincy, FL 32351

Jerry A. Bartz

University of Florida, Plant Pathology, 1453 Fifield Hall, Gainesville, FL 32611

‘Tribeca’ is a fresh market hybrid tomato (*Solanum lycopersicum* L.) that has resistance to Tomato spotted wilt virus (TSWV) and heat-tolerant fruit setting (HT). ‘Tribeca’ has performed well on the peninsula of Florida where its ability to set fruit under high temperatures makes it an attractive cultivar choice even when TSWV is not a major production issue. It appears well adapted to the southeastern United States where TSWV has been problematic, and it has done well in trials in Turkey and some other eastern European countries. Inbred Fla. 8124C is the TSWV-resistant parent and has moderate HT. Inbred Fla. 8249, the other parent, has good H-7 fruit setting ability.

## Origin

The pedigree of ‘Tribeca’ hybrid, tested as Fla. 8363, is shown in Figure 1. Fla. 8249 is the seed parent and the main source of HT fruit setting. The HT is in the background of both parents that led to Fla. 8249. The HT of Fla. 7756 came from Fla. 7236 and the HT in the other parent could have come from Fla. 7324 and/or Fla. 7236. The HT of Fla. 7236 was derived from Fla. 7156, which in turn was derived from ‘Campbell 28’ (C28). Fla. 7324 is the HT parent in ‘Equinox’ (Scott et al., 1995). Besides HT, Fla. 8249 has the *n-4* nipple-tip blossom scar that originated in NC 8276 (Barten et al., 1994). C9 is a never-ripe inbred from a never-ripe line, Austin Fletcher, crossed with ‘Florida MH-1’ (MH1) (Crill et al., 1971). Other parents have been described previously: 648, ‘Suncoast’ (Scott et al., 1985), and 74VF18 (Scott et al., 1989). Fla. 8124C is an F<sub>7</sub> inbred that was selected from the cross that became hybrid ‘Fla. 7964’ whose pedigree is published (Scott et al., 2004). It is the source of tomato spotted wilt resistance that traces back to the South Afri-

can cultivar Stevens (Stevens et al., 1996). Fla. 8124C also has moderate HT that traces to Fla. 7324, which was used as a recurrent parent three times as TSWV resistance was moved from ‘Stevens’. Fla. 8124C has large fruit size that is derived from Fla. 7777, a large globe type with Fla. 7060 (Scott et al., 1989) and ‘Suncoast’ (Scott et al., 1985) in its background.

## Description

‘Tribeca’ has a determinate (*sp*) vine with medium vigor. Overall, maturity is early-midseason with early production greater than heat-sensitive cultivars under high-temperature growing conditions. The jointed pedicels attach to fruit that are flat-round in shape, have uniform shoulders (*u* or *ug*), and have smooth blossom scars conferred in part by the *n-4* gene from Fla. 8249 and the *n-2*

gene from Fla. 8124C (Barten et al., 1994). Fruit firmness is comparable to that of other cultivars presently grown in Florida and the southeast (Table 1). Exterior color of ‘Tribeca’ was relatively dark red as indicated by lower L values and hue angles compared with several Florida-grown cultivars (Table 1). The internal L and hue angle values were either comparable or less than those of commercial Florida cultivars indicating color to be similar or darker red, respectively. Fruit are usually free of white tissue formation in the pericarp, but some white tissue can form under fertilizer stress conditions. Fruit flavor has been rated by the senior author as 3 = good on a 1 to 5 scale ranging from 1 = poor to 5 = excellent. Flavor would be in a similar range as that of widely grown Florida tomatoes such as ‘Sebring’, ‘Florida 91’, and ‘Florida 47’. ‘Tribeca’ has had consistently good yield and fruit size in north Florida where TSWV is often a serious threat to production (Table 2). In Fall 2006, it was comparable to six cultivars, including five resistant to TSWV, for marketable total and extralarge fruit, percentage of marketable fruit, and fruit weight. In Spring 2007, TSWV was prevalent in the trial and yields of the two susceptible cultivars Phoenix and Florida 47 suffered compared with the resistant cultivars. ‘Tribeca’ had yields and fruit size comparable to the seven TSWV cultivars and was only less than ‘Fletcher’ for percentage of marketable fruit. In Fall 2007, the tomatoes were subjected to relatively severe heat stress and infection with Tomato yellow leaf curl virus. ‘Tribeca’ was numerically at the top of the trial for marketable yield; extralarge production was significantly greater than eight cultivars with only ‘Bella Rosa’ having similar production of

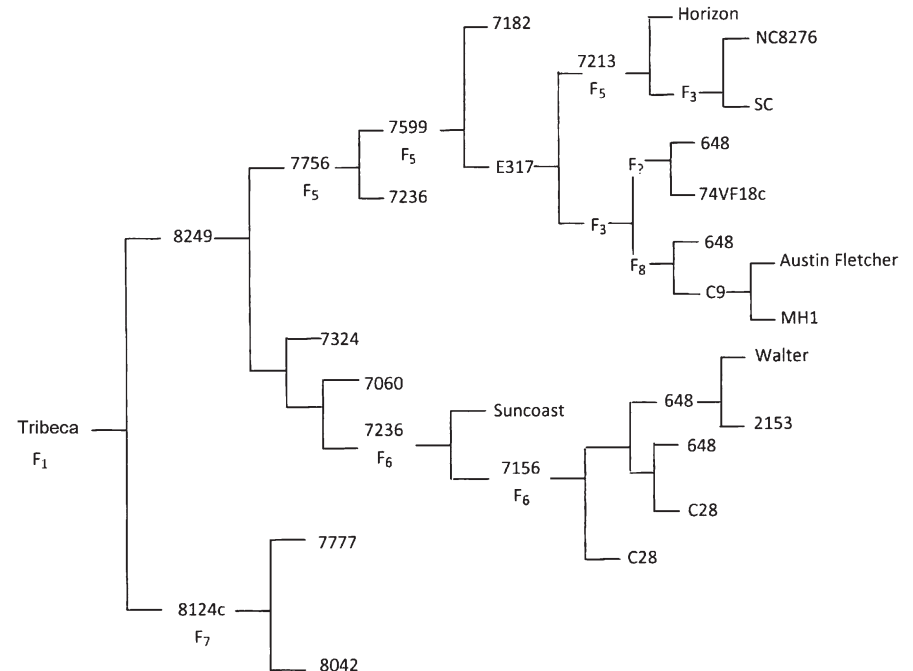


Fig. 1. Pedigree of ‘Tribeca’ hybrid tomato.

Received for publication 6 Nov. 2008. Accepted for publication 2 Dec. 2008.  
 Thanks to Cathy Provenzano, Jose Diaz, Jackie Snell, and Rosa Ayala for technical assistance.  
<sup>1</sup>To whom reprint requests should be addressed; e-mail jwsc@ufl.edu.

Table 1. Firmness, external color, and internal color measurements for tomato hybrids grown over two seasons in Balm, FL.

Season	Hybrid	Firmness (mm deformation)	External color		Internal color	
			L	Hue angle	L	Hue angle
Fall 2006	Florida 47	3.2 a <sup>2</sup>	42.7 a	45.6 a	40.3 b	41.7 a
	Tribeca	2.7 b	40.2 c	42.8 b	39.0 bc	40.9 a
	Florida 91	2.6 b	41.4 b	44.8 a	42.6 a	42.3 a
	Solar Fire	2.4 b	41.5 b	45.6 a	38.1 c	39.0 b
Spring 2005	Fla. 7964	3.4 a	40.2 b	40.8 d	42.4 a	41.5 b
	Sebring	2.6 b	41.8 a	45.9 a	41.6 a	40.1 b
	Florida 47	2.5 b	41.5 a	44.5 b	44.3 a	45.1 a
	Tribeca	2.4 b	40.1 b	39.9 d	41.9 a	42.0 b
	Sanibel	2.4 b	41.2 a	42.4 c	44.3 a	45.2 a

<sup>2</sup>Mean separation in columns within season by Duncan's multiple range test at  $P \leq 0.05$ .

Table 2. Total and extralarge marketable fruit, marketable percentage, and fruit weight for tomato hybrids at Quincy, FL, over three seasons.

Entry	Marketable yield (11.3 kg cartons/ha)		Marketable (% by wt.)	Fruit wt. (g)
	Extra-large	Total		
Fall 2006				
Quincy	1,914 ab <sup>2</sup>	2,826 a	84.6 a	176 a
Bella Rosa	2,019 a	2,485 ab	79.3 a	190 a
Phoenix	1,669 ab	2,209 ab	77.6 a	187 a
Tribeca	1,737 ab	2,134 ab	80.0 a	190 a
Amelia	1,709 ab	2,115 ab	70.9 a	193 a
Red Defender	1,293 ab	1,896 ab	76.4 a	170 a
Crista	1,320 ab	1,745 ab	76.1 a	184 a
Florida 47	1,070 b	1,480 b	76.0 a	181 a
Spring 2007				
Fletcher	3,062 a	3,414 a	84.1 a	229 ab
Quincy	2,598 ab	2,851 ab	77.1 ab	232 ab
Tribeca	2,552 ab	2,779 ab	70.9 bc	230 ab
Red Defender	2,290 ab	2,597 ab	71.9 bc	196 b
Mt. Glory	2,334 ab	2,575 ab	78.1 ab	210 ab
Amelia	2,340 ab	2,524 ab	79.2 ab	252 a
Bella Rosa	2,311 ab	2,513 ab	71.2 bc	232 ab
Crista	1,857 bc	2,127 bc	76.0 ab	213 ab
Phoenix	1,252 c	1,432 c	65.5 c	221 ab
Florida 47	435 d	567 d	50.0 d	198 b
Fall 2007				
Tribeca	1,226 a	1,631 a	74.7 a	193 a
Red Defender	815 bc	1,556 a	69.5 a-c	162 d
Bella Rosa	1,122 ab	1,533 ab	68.0 a-c	193 a
Quincy	755 bc	1,196 ab	71.4 ab	179 a-d
Crista	770 bc	1,161 ab	68.8 a-c	184 ab
Phoenix	712 c	1,072 b	61.5 bc	181 a-c
Fletcher	485 c	940 b	63.8 bc	162 d
Florida 47	454 c	833 b	65.3 a-c	164 cd
Amelia	590 c	818 b	61.6 bc	190 ab
Mt. Glory	469 c	790 b	61.4 c	170 b-d

<sup>2</sup>Mean separation in columns within season by Duncan's multiple range test, at  $P \leq 0.05$ , based on a larger number of entries.

Table 3. Marketable yield, fruit size, and culls for selected tomato hybrids in Fall 2006 at Balm, FL.

Hybrids	Marketable yield (11.3 kg cartons/ha)	Fruit size (g)	Culls (% by wt)
Fla. 8367	2,981 a <sup>2</sup>	232 a-c	15 d
Fla. 8314	2,537 ab	204 cd	17 d
Tribeca	1,964 a-c	207 cd	26 cd
Scarlet Red	1,808 bc	204 cd	35 bc
Florida 47	1,549 b-d	187 d	34 bc
Solar Fire	1,366 b-d	215 b-d	19 cd
Sebring	1,215 cd	218 b-d	31 c
Crista	1,166 cd	204 cd	50 ab
Phoenix	1,154 cd	261 a	27 cd
Florida 91	474 d	249 ab	52 a

<sup>2</sup>Mean separation in columns by Duncan's multiple range test at  $P \leq 0.05$ .

extralarge fruit. Total yield was comparable to four cultivars and significantly more than the other five. The percentage of marketable fruit and fruit size for 'Tribeca' was comparable to four cultivars and greater than five others (Table 2). 'Tribeca' also performed well in a yield trial at GCREC in Fall 2006 (Table 3). TSWV has not been problematic on the Florida peninsula, but 'Tribeca' may be useful there for its HT alone. The HT of 'Tribeca' is evident in the relatively good performance in the fall crops (Tables 2 and 3). Fla. 8124C has globe-shaped fruit, whereas Fla. 8249 has medium-large, flat-round fruit.

### Disease Resistance

Resistance to TSWV is conferred by the *Sw-5* gene, which is heterozygous in 'Tribeca' (Table 4). Fla. 8124C is the source of the *Sw-5* gene as indicated by the linked molecular marker CT220F/R (Fig. 2). The hybrid is homozygous-resistant to fusarium wilt races 1 and 2 incited by *Fusarium oxysporum* f. sp. *lycopersici* (Sacc.) Snyder & Hansen (*I*, *I-2* genes); homozygous-resistant to Gray leafspot incited by *Stemphyllium* spp. Webber (*Sm* gene); and heterozygous-resistant to verticillium wilt race 1 incited by *Verticillium dahliae* Kleb. (*Ve* gene). Fla. 8124C is the source of resistance to verticillium wilt because Fla. 8249 is susceptible. Stem scar water uptake for 'Tribeca' and Fla. 8249 appeared to be low (Table 5), which would indicate tolerance to bacterial soft rot incited by *Erwinia carotovora* Jones (Smith et al., 2008). However, in an earlier experiment, Fla. 8124C had high stem scar water uptake (Scott and Bartz, unpublished data). A hybrid like 'Tribeca' between low (Fla. 8249) and high (Fla. 8124C) water uptake parents would be predicted to have intermediate uptake (Smith et al., 2008). Further testing is needed to determine if water uptake is low or intermediate for 'Tribeca'. 'Tribeca' is tolerant to most common fruit disorders, including graywall where little to none has been seen under conditions conducive to this disorder. Fla. 8124C has only moderate tolerance to graywall, whereas Fla. 8249 appears highly tolerant. There is some zippering in both parents and the hybrid, but zippering expression is usually not excessive. 'Tribeca' and its

Table 4. Tomato spotted wilt virus (TSWV) incidence for tomato hybrids at Quincy, FL, Spring 2007.

Hybrid <sup>2</sup>	Plant no.	TSWV incidence (%)
Fletcher	48	0
BHN 44	48	0
BHN 602	48	0
Tribeca	48	0
Red Defender	48	0
Phoenix	48	65
Florida 47	48	82

<sup>2</sup>Phoenix and Florida 47 are susceptible, the others are resistant (*Sw-5* gene).