

'Simon Fraser' Rose

Ian S. Ogilvie and Neville P. Arnold

Research Branch, Agriculture Canada, P.O. Box 3398, 801 Route 344, L'Assomption, Qué. J0K 1 G0, Canada

Additional index words. rose breeding, winter hardiness, disease resistance, *Rosa kordesii*

'Simon Fraser' is a winter-hardy shrub rose (*Rosa kordesii* Wulff.) with an upright growth habit and pink flowers. The plant flowers profusely and recurrently and is highly resistant to powdery mildew [*Sphaerot/zeta pannosa* (Wallr. ex Fr.) Lév.] and blackspot (*Diplocarpon rosae* Wolf.).

Origin

'Simon Fraser' was derived from the pollination of B04 (a breeding line descended from 'Bonanza', 'Arthur Bell', 'Red Dawn', and 'Suzanne') by P02 (a breeding line originating from *R. kordesii*, 'Champlain', 'Red Dawn', and 'Suzanne') (Fig. 1). It carries genes for winter hardiness from the *R. kordesii* male parent and from both *R. laxa* Retzius and *R. spinosissima* L. (parents of 'Suzanne').

Description

'Simon Fraser' has an upright plant habit and grows to 0.6 m at L'Assomption, Qué, Canada. The flowers average 50 mm in diameter and are borne in clusters of one to four (Fig. 2). The first flowers to appear are often single (five petals), but subsequent flowers may have up to 22 petals. The unopened bud is deep pink and changes to medium pink at the unfurling stage. The petals are medium pink. Based on the Royal Horticultural Society (RHS) color chart (RHS, 1966), the upper and lower petal surface colors are classified as 58B and 58C red-purple and leaves as 147A yellow-green. The foliage is abundant, dark green, and leathery. There are three to five leaflets that average 36 mm long × 22 mm wide. They are ovate, acuminate, and dentate. There is an average of 14 thorns per 100 mm of stem.

Performance

'Simon Fraser' has been observed at L'Assomption for 3 years. This site is in Canadian plant hardiness zone 5a (Ouellet and Sherk, 1967), or U.S. Dept. of Agriculture zone 4 (Cathey and Heriteau, 1990). This rose has survived winter with no protection other than natural snow cover and has shown no or slight winter injury at L'Assomption. Plants flowered repeatedly for 15 to 16 weeks from June to September. 'Simon Fraser' is highly resistant to powdery mildew and blackspot in

the field. This rose is easily propagated from softwood cuttings and has been selected for its ability to grow well on its own roots.

Availability

'Simon Fraser' has been registered with the International Registration Authority for Roses (The American Rose Society), P.O.

Box 30,000, Shreveport, LA 71130-0030, and with the Canadian Ornamental Plant Foundation (COPF), 652 Aberdeen Ave., North Bay, Ont. PIB 7H9, Canada. Royalties will be collected. Propagation material will be maintained by I.S.O. Limited amounts of propagation stock are available to nurseries with COPF membership. American requests should be made to Bailey Nurseries, 1325 Bailey Rd., St. Paul, MN 55119.

Literature Cited

- Cathey, H.M. and J. Heriteau. 1990. Mapping it out. *Amer. Nurseryman* 171(5):55-63.
Ouellet, C.E. and L.C. Sherk. 1967. Map of plant hardiness zonation in Canada. Can. Dept. Agr. Publ. 5003.
Royal Horticultural Society. 1966. Royal Horticultural Society colour chart. Royal Hort. Soc., London.

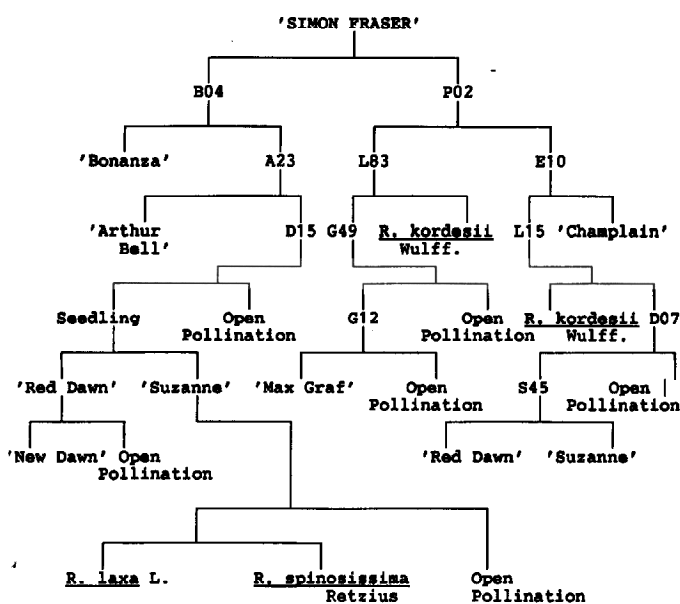


Fig. 1. 'Simon Fraser' rose pedigree.



Fig. 2. 'Simon Fraser' rose.

Received for publication 21 Sept. 1992. Accepted for publication 17 Jan. 1993. The cost of publishing this paper was defrayed in part by the payment of page charges. Under postal regulations, this paper therefore must be hereby marked *advertisement* solely to indicate this fact.