

'Sunprince' Peach¹

W. R. Okie,² V. E. Prince,³ and C. C. Reilly⁴

U.S. Department of Agriculture, Agricultural Research Service, Southeastern Fruit and Tree Nut Research Laboratory, P.O. Box 87, Byron, GA 31008

Additional index words. *Prunus persica*, fruit breeding, bacterial spot, *Xanthomonas campestris* pv. *pruni*

'Sunprince' peach [*Prunus persica* (L.) Batsch] has been released to provide a cultivar adapted to the southeastern United States ripening in 'Redskin' and 'Blake' season with better external color and shape than 'Redskin' and higher bacterial spot resistance than 'Blake'.

Origin

'Sunprince' resulted from a cross (Fig. 1) of 'Redglobe' x FV9-6288 made by V. E. Prince in 1963. The seedling was selected when it first fruited in 1966 at Byron and was subsequently tested as BY4-7521.

Description

'Sunprince' trees are vigorous and productive with excellent cropping consistency in both North Carolina and Georgia. The foliage and fruit are moderately resistant to bacterial spot [*Xanthomonas campestris* pv. *pruni* (Smith 1903) Dye 1978]. Bacterial spot ratings taken in North Carolina over 4 years indicate that 'Sunprince' is more resistant than 'Blake' and almost as resistant as 'Redskin'. Trees at Byron have been indexed and found to be free of *Prunus* ringspot virus. Leaf gland type is globose. The chilling requirement to break the leaf bud rest period is approximately 800 hr below 7.2°C, slightly higher than 'Redskin'.

'Sunprince' blooms with 'Redskin'. The self-fertile blossoms have large, pink (showy) petals. Fruits (Fig. 2) are round and large, 5.5 to 7 cm in diameter. The lightly pubescent surface is 50–75% bright red at maturity, with an attractive yellow undercolor. Fruit size, shape and color are superior to 'Redskin' at Byron. The fruits have yellow, firm, melting flesh with some red at the freestone pit cavity. Split pits are rare. Flesh texture and flavor are good. Ratings of flesh browning from North Carolina place it similar to 'Cresthaven' and

better than 'Blake' or 'Redskin'. 'Sunprince' fruits mature with 'Redskin' and 'Blake' in late July at Byron, or a few days before 'Elberta'.

Availability

'Sunprince' is recommended for trial wherever 'Blake' and 'Redskin' are grown. Limited amounts of budwood but no trees are available from W. R. Okie.

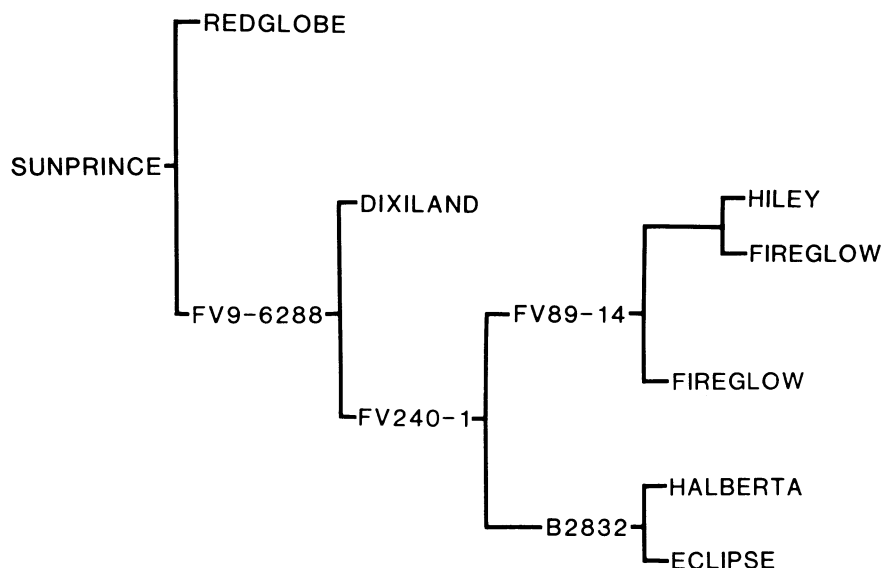


Fig. 1. Pedigree of 'Sunprince' peach.

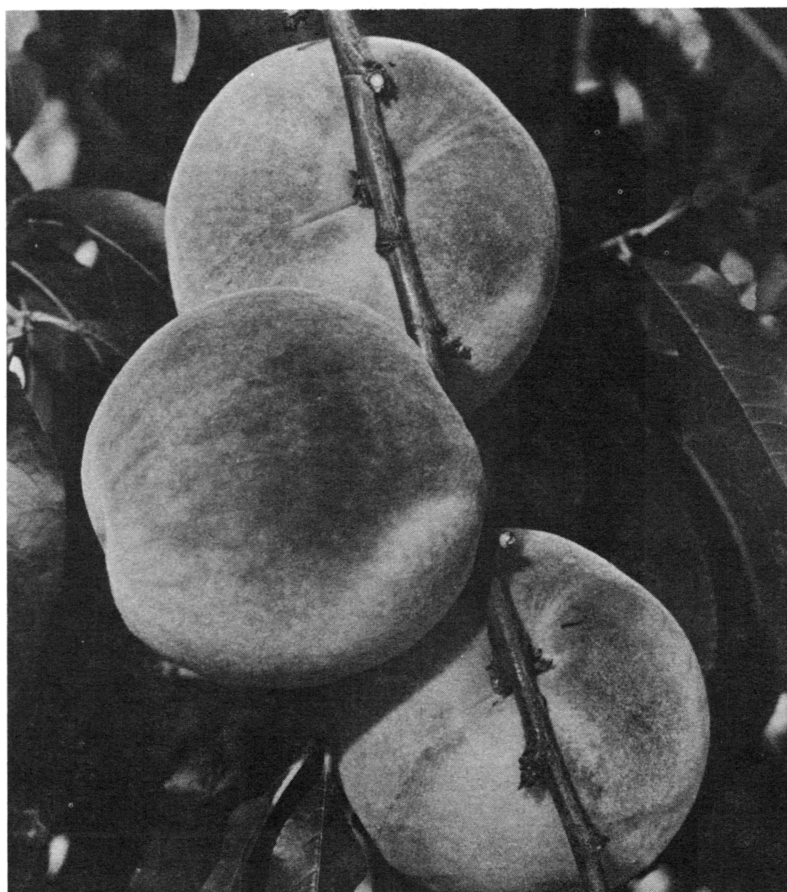


Fig. 2. Ripe fruit of 'Sunprince' peach.

¹Received for publication Feb. 12, 1982.

The cost of publishing this paper was defrayed in part by the payment of page charges. Under postal regulations, this paper therefore must be hereby marked *advertisement* solely to indicate this fact.

²Horticulturist.

³Retired Horticulturist.

⁴Plant Pathologist.