

Fruit Set: Very low (about 5 to 10%), usually only one fruit per cluster. Maturity season: Fruit ripens about 3 weeks after 'Delicious' apple.

In common with other *P. calleryana* clones, the fruit is persistent, even at full ripeness and thus does not drop to the ground to cause a messy litter under the trees.

'Autumn Blaze' has the same desirable resistance to a wide array of insects and diseases as do other selections of this species. Like other clones, also, it is not resistant to bacterial infection by *Pseudomonas syringae*.

While *P. calleryana* as a species is not hardy to the coldest areas of the country, tests with 'Autumn Blaze' indicate it is somewhat hardier than other selections tested. Xylem parenchyma of other *P. calleryana* stems was killed at -25°C while 'Autumn Blaze' required -27° . Also 'Autumn Blaze' buds were hardy to -34° while buds of other selections were hardy only to -28° .

Availability

Scions will be available to research stations and arboreta in the winter of 1980-81. Arrangement for commercial propagation of 'Autumn Blaze' is being made by license agreement with specific nurseries.

Literature Cited

1. British Colour Council. 1966. Horticultural colour chart. Royal Horticultural Society.

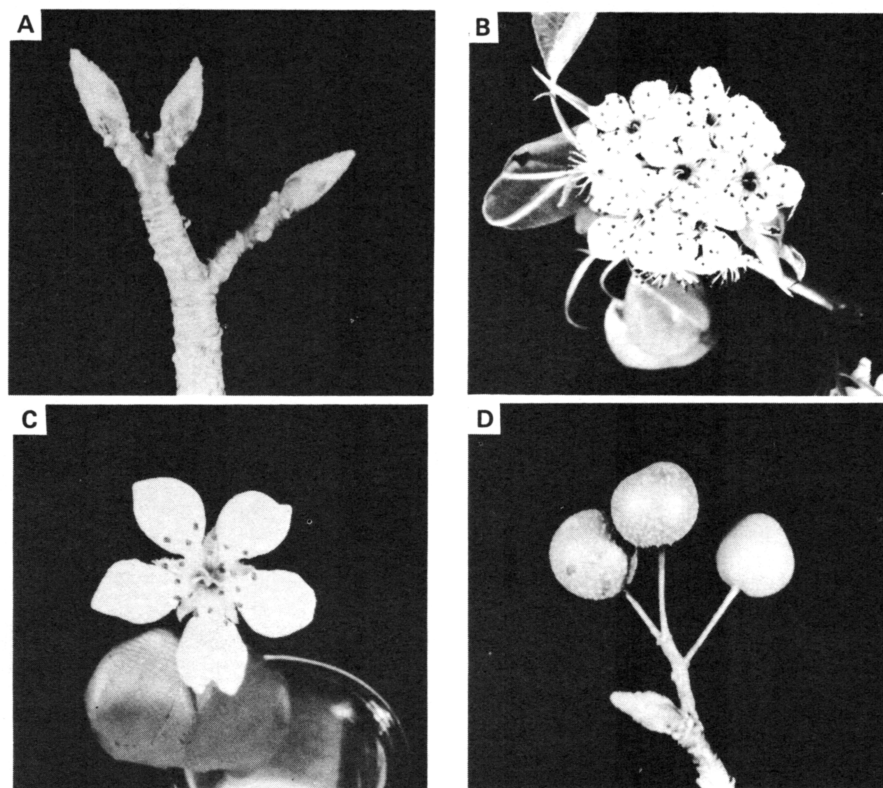


Fig. 2. Plant characters of 'Autumn Blaze'. A, dormant flower buds; B, inflorescence at anthesis; C, detail of a single flower; D, mature fruit. Leaf shape and color are shown on the front cover of this issue.

tural colour chart. Royal Horticultural Society.

2. Rehder, A. 1947. Manual of cultivated trees and shrubs, 2nd ed. Macmillan, New York.
3. Reimer, F. C. 1925. Blight resistance in

pears and characteristics of pear species and stocks. Ore. Agr. Expt. Sta. Bul. 214.

4. Whitehouse, W. E., J. L. Creech, and G. A. Seaton. 1963. 'Bradford' ornamental pear — a promising shade tree. *Amer. Nurs.* 177(8):74.

HortScience 15(6):831. 1980.

'Beersheva' Suaeda¹

LeMoyne Hogan, Warren Jones, and Chi Won Lee²

Department of Plant Sciences, University of Arizona, Tucson, AZ 85721

Additional index words. halophyte, groundcover, ornamental breeding, *Suaeda vera*

'Beersheva' *suaeda* (*Suaeda vera* Forssk.), Chenopodiaceae, was released by the Arizona Agricultural Experiment Station to provide a salt-tolerant, drought-tolerant, bright green, perennial groundcover adapted to the arid southwestern United States and similar regions of the world.

Origin

'Beersheva' is a selection derived from open-pollinated seed collected in the Negev Desert of Israel in 1975.

¹Received for publication May 1, 1980. Journal paper no. 3332, Arizona Agriculture Experiment Station, Tucson, AZ 85721.

The cost of publishing this paper defrayed in part by the payment of page charges. Under postal regulations, this paper must therefore be hereby marked *advertisement* solely to indicate this fact.

²Professor of Horticulture, Professor of Landscape Architecture and Assistant Professor of Plant Sciences, respectively.

Description

'Beersheva' (Fig. 1) is an evergreen, herbaceous, perennial, procumbent shrub that grows 3.5 m in diameter and 0.5 m in height. It has survived -12°C without foliar damage at Tucson, Arizona. The dense bright green, fleshy leaves are alternate, scattered, linear, sessile and attenuate. Leaves on the branches are 6-7 mm long and the lower leaves are 1-1.3 cm long. New stem growth is rose-colored and older stems are tan. Flowers are small, inconspicuous, axillary, mostly solitary, and bisexual. 'Beersheva' flowers in April in Tucson, Arizona.

Outstanding characteristics and uses

'Beersheva' is tolerant of salinity and drought and it withstands high temperatures and low humidity. It has a very deep and extensive root system. Plants grow well on sandy or calcareous soils.

It is readily propagated by tip cuttings under mist. 'Beersheva' can easily be maintained at less than 0.5 m in height by occasional selective pruning and is an excellent groundcover for hot, saline, dry locations.

Availability

Rooted cuttings may be obtained in limited quantities from LeMoyne Hogan, Department of Plant Sciences, University of Arizona, Tucson, AZ 85721.



Fig. 1. Foliage of 'Beersheva' *suaeda*.