

'Sunripe' Nectarine¹

C. P. Andrews²

Agricultural Research Center, Monticello, FL 32344

W. B. Sherman and P. M. Lyrene³

Department of Fruit Crops, University of Florida, Gainesville, FL 32611

Additional index words. *Prunus persica*, fruit breeding, low chilling

'Sunripe' nectarine (*Prunus persica* (L.) Batsch) has been released to provide a medium large, high quality freestone nectarine with a low chilling requirement.

Origin

'Sunripe' originated in Gainesville, Florida, in 1967 from an open pollination of ('Flordawon' × 'Merrill Princess'). It was selected in 1970 and tested as Florida 7E-62.

Description

'Sunripe' trees are vigorous and rounded in growth with strong branches. They require about 350hr below 7.2°C for adequate flowering and leafing at Gainesville. They bloom usually in late February, about 10 days after 'Sunred' nectarine but 5 days before 'Sunlite' nectarine. 'Sunripe' is highly productive and requires moderate thinning some years when

most flowers set fruit. Leaf glands are reniform. Flowers are large, showy and medium pink. Pollen is bright yellow and very abundant. Trees are self-fertile.

'Sunripe' fruit mature at Gainesville in late May to early June or about 1 week after 'Sunlite' nectarine. 'Sunripe' produces firm fruit of medium large size (80 to 110g), high in flavor

and freestone. Fruit shape is roundish oblong with almost equal halves (Fig. 1). Flesh color is clear yellow with a trace of red near the pit. Fruit are attractive, having a deep yellow ground color with about 80% bright red blush.

Outstanding characteristics

Major advantages of 'Sunripe' are its medium large fruit, high fruit flavor, and later ripening which extends the nectarine harvest season.

Availability

Budwood of 'Sunripe' may be obtained from the Florida Foundation Seed Producers, Inc., P. O. Box 14006, University of Florida, Gainesville, FL 32604. Limited quantities of budwood may be obtained from the Fruit Crops Department, University of Florida, Gainesville, FL 32611.

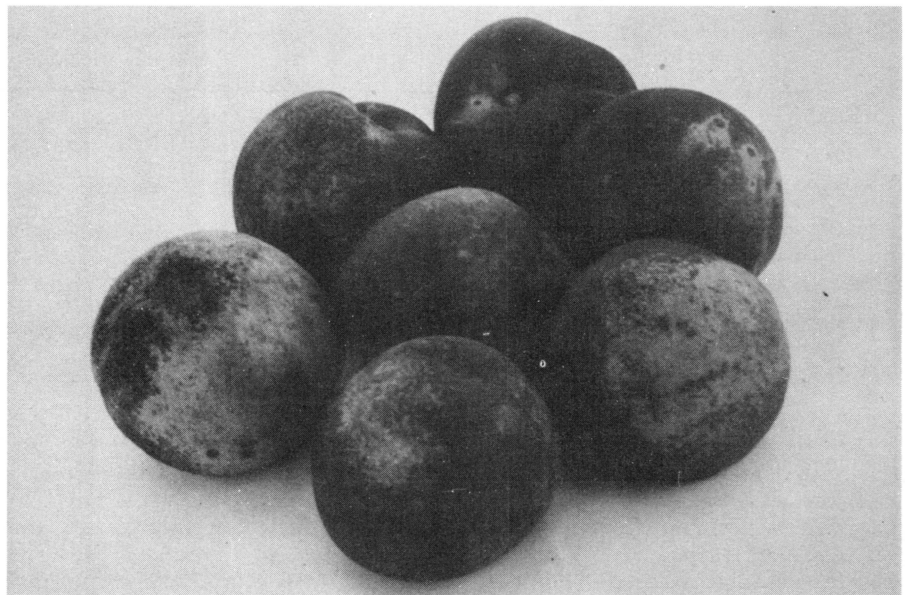


Fig. 1. 'Sunripe' nectarine.

¹Received for publication October 12, 1978. Florida Agricultural Experiment Station Journal Series No. 1374.

The cost of publishing this paper was defrayed in part by the payment of page charges. Under postal regulations, this paper must therefore be hereby marked *advertisement* solely to indicate this fact.

²Assistant Professor of Horticulture.

³Professor and Assistant Professor of Horticulture, respectively.

'Flordaking' Peach¹

C. P. Andrews²

Agricultural Research Center, Monticello, FL 32344.

W. B. Sherman and P. M. Lyrene³

Department of Fruit Crops, University of Florida, Gainesville, FL 32611.

Additional index words. *Prunus persica*, fruit breeding, low chilling

'Flordaking' peach (*Prunus persica* (L.) Batsch) has been released to fill the

need for a very early, large peach with a low chilling requirement.

¹Received for publication October 12, 1978. Florida Agricultural Experiment Station Journal Series No. 1375.

The cost of publishing this paper was defrayed in part by the payment of page charges. Under postal regulations, this paper must therefore be hereby marked *advertisement*

solely to indicate this fact.

²Assistant Professor of Horticulture.

³Professor and Assistant Professors of Horticulture, respectively. The authors gratefully acknowledge the technical assistance of L. Henderson.

Origin

'Flordaking' resulted from a cross of Florida selection 9-67 (16-61 × 'June Gold') by 'Early Amber'. 16-61 is an open pollination of FV243-105 ('Southland' × 'Hawaiian'). 'Flordaking' was tested as Florida 15-34.

Description

'Flordaking' trees are vigorous and productive. They require about 450hr below 7.2°C for adequate flower and leaf development or about the same as 'Rio Grande' peach and 'Sunlite' nectarine. 'Flordaking' requires heavy thinning some years to assure marketable fruit size. Leaf glands are globose and flowers are non-showy. Pollen is bright yellow and very abundant. Trees are self-fertile.

'Flordaking' fruit ripen in early to